

GD&ASSOCIATES

YEARLY RENTAL | SOUTH BALI EXCLUSIVES | MODERN NORDIC WITH OCEAN VIEWS



MODERN NORDIC WITH OCEAN VIEWS PECATU, SOUTH BALI

| | | |
|------------|---------------|---------------|
| PRICE USD | PRICE IDR | OWNERSHIP |
| USD 58,000 | IDR 1,000,000 | Yearly Rental |

| | | |
|--------------|-------|------------|
| BEDS / BATHS | LEVEL | YEAR BUILT |
| 3 / 3 | 2 | 2022 |

| | | |
|---------------|-----------------|--------|
| LAND SIZE +/- | LIVING SIZE +/- | DESIGN |
| 500 sqm | 200 sqm | Modern |
| 5.00 are | 2.00 are | |

| | | |
|--------------|--------|------------------------|
| CERTIFICATES | ZONING | VIEWS |
| Akta | Green | 180 degree ocean views |

This property in Uluwatu offers a 500 sqm plot of land, providing peace and privacy while remaining close to the attractions of the Bukit area. It features a family villa with a spacious garden in a residential zone.

Just a 10-minute drive away, you'll find Bali's stunning beaches—Thomas, Suluban, Uluwatu, and Nyang Nyang—alongside popular spots like Ulu Cliffhouse, Alcemy, and Cashew Tree, as well as Bambu Fitness and Uluwatu Temple. Built in 2021, the villa features a spacious grass garden with ocean views from two levels, smart storage solutions, and sweeping 180-degree views of the sea, spanning from the East tip of Java to Bali's central volcanoes.

The floor plan features 3 bedrooms and 3 bathrooms across approximately 200 square meters. The ground floor includes a kitchen and dining area with teak cabinetry, Quadra stone countertops, and wooden flooring. Sliding glass doors lead to the terrace and garden with pool. Two bedrooms on this level have king-size beds, wardrobes, and ensuite bathrooms with rain showers.

The upper floor includes a lounge, two offices, and the master suite, which has a super king-size bed, built-in wardrobe, and sliding doors to the upper terrace with stunning views. The ensuite bathroom features a walk-in shower and a freestanding bathtub. The ground-floor terrace has an 8-seater dining table, while the upper terrace offers a sofa set and daybed for enjoying the views, day and night.

Sustainability credentials include solar power, which also helps reduce electricity bills, and grey and rain water recycling to limit impact on Bali's scarce water supply.

Garage | Garden | Storage Room | Swimming Pool

GD&ASSOCIATES *by Gilles Demunter*®

©2021 PT SURGA TROPIS HIDUP. ALL RIGHTS RESERVED

www.gillesdemunter.com | info@gillesdemunter.com | +(62)819-99-971-591
GD Headquarters @ Made's Warung Unit #5, Jalan Raya Seminyak,
Seminyak, Kecamatan Kuta, Kabupaten Badung, Bali 80361, Indonesia.

GD&ASSOCIATES



OVERVIEW

RENT

STATUS: GOOD CONDITION

DESIGN: MODERN

LAND SIZE: 500 sqm / 5.00 are

LIVING SIZE: 200 sqm / 2.00 are

LEVEL: 2

BED / BATH: 3 / 3.0

VIEWS: 180 DEGREE OCEAN VIEWS

FURNISHING: FULLY-FURNISHED

INCLUDE STAFF: YES

PAYMENT TERM: NO

CERTIFICATION: AKTA

ZONING: GREEN

AMENITIES

- ✓ GARAGE
- ✓ GARDEN
- ✓ STORAGE ROOM
- ✓ SWIMMING POOL

OTHERS

- ✓ SWIMMING POOL
- ✓ GARAGE FOR 2 CARS/SCOOTERS + WASHER/DRYER
- ✓ POOL & AMP; GARDEN MAINTENANCE
- ✓ 400 MBPS HIGH-SPEED INTERNET
- ✓ FULLY EQUIPPED KITCHEN
- ✓ SOLAR POWER & AMP; GREY-WATER RECYCLING
- ✓ FINGERPRINT/CODE ACCESS & AMP; ALARMED MASTER BEDROOM
- ✓ STORAGE FOR SURFBOARDS AND GEAR

NEARBY

NYANG NYANG BEACH

ULUWATU TEMPLE

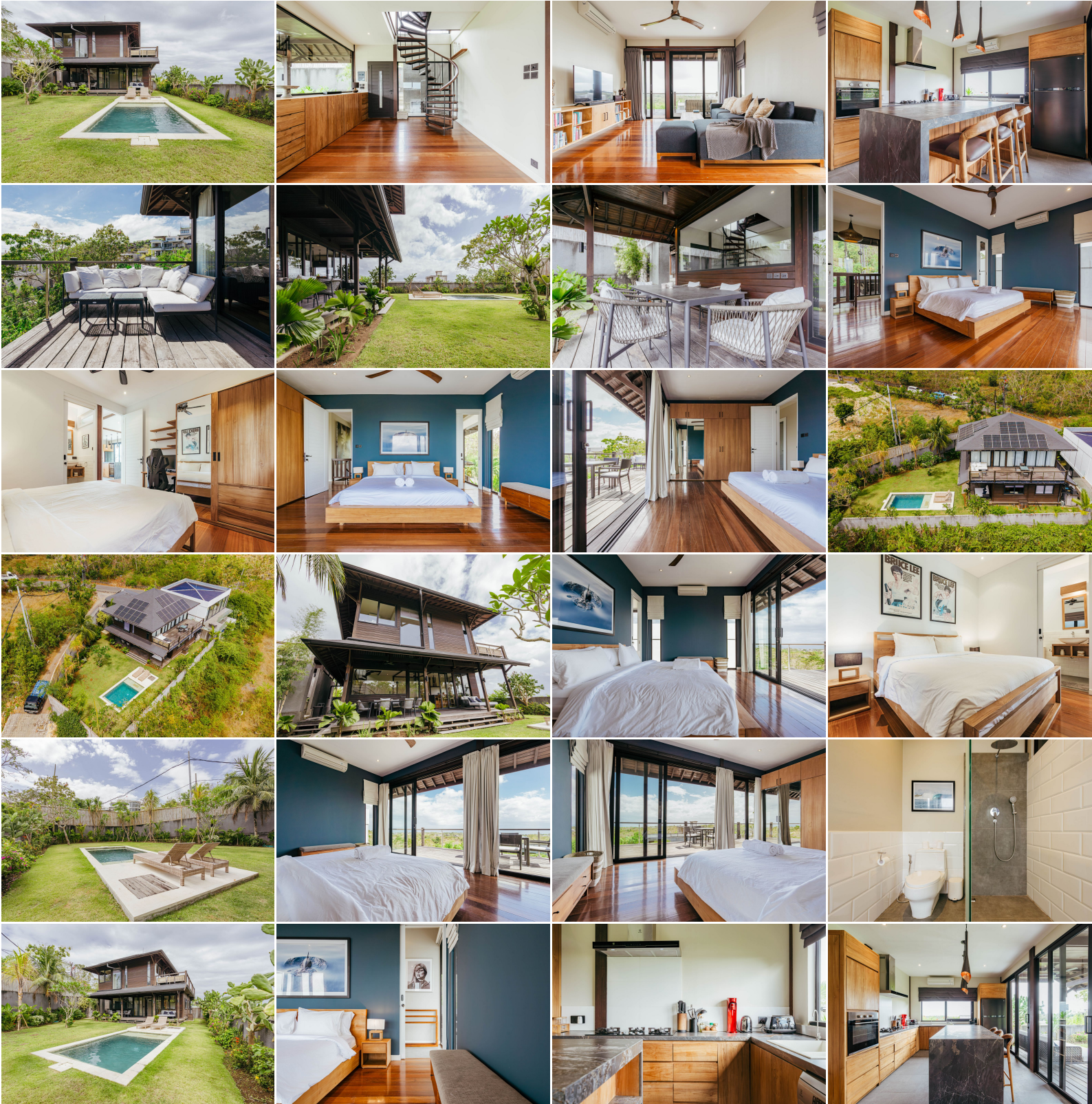
GOOSEBERRY

GD&ASSOCIATES *by Gilles Demunter*®

©2021 PT SURGA TROPIS HIDUP. ALL RIGHTS RESERVED

www.gillesdemunter.com | info@gillesdemunter.com | +(62)819-99-971-591
GD Headquarters @ Made's Warung Unit #5, Jalan Raya Seminyak,
Seminyak, Kecamatan Kuta, Kabupaten Badung, Bali 80361, Indonesia.

GD&ASSOCIATES



GD&ASSOCIATES *by Gilles Demunter*[®]

©2021 PT SURGA TROPIS HIDUP. ALL RIGHTS RESERVED

www.gillesdemunter.com | info@gillesdemunter.com | + (62) 819-99-971-591

GD Headquarters @ Made's Warung Unit #5, Jalan Raya Seminyak,
Seminyak, Kecamatan Kuta, Kabupaten Badung, Bali 80361, Indonesia.

GD&ASSOCIATES



GD&ASSOCIATES *by Gilles Demunter*®

©2021 PT SURGA TROPIS HIDUP. ALL RIGHTS RESERVED

www.gillesdemunter.com | info@gillesdemunter.com | + (62) 819-99-971-591

GD Headquarters @ Made's Warung Unit #5, Jalan Raya Seminyak,
Seminyak, Kecamatan Kuta, Kabupaten Badung, Bali 80361, Indonesia.

GD&ASSOCIATES



GD&ASSOCIATES *by Gilles Demunter*®

©2021 PT SURGA TROPIS HIDUP. ALL RIGHTS RESERVED

www.gillesdemunter.com | info@gillesdemunter.com | +(62)819-99-971-591

GD Headquarters @ Made's Warung Unit #5, Jalan Raya Seminyak,
Seminyak, Kecamatan Kuta, Kabupaten Badung, Bali 80361, Indonesia.

GD&ASSOCIATES



GD&ASSOCIATES *by Gilles Demunter*®

©2021 PT SURGA TROPIS HIDUP. ALL RIGHTS RESERVED

www.gillesdemunter.com | info@gillesdemunter.com | +(62)819-99-971-591

GD Headquarters @ Made's Warung Unit #5, Jalan Raya Seminyak,
Seminyak, Kecamatan Kuta, Kabupaten Badung, Bali 80361, Indonesia.

GD&ASSOCIATES



GD&ASSOCIATES *by Gilles Demunter*®

©2021 PT SURGA TROPIS HIDUP. ALL RIGHTS RESERVED

www.gillesdemunter.com | info@gillesdemunter.com | +(62)819-99-971-591

GD Headquarters @ Made's Warung Unit #5, Jalan Raya Seminyak,
Seminyak, Kecamatan Kuta, Kabupaten Badung, Bali 80361, Indonesia.

GD&ASSOCIATES



GD&ASSOCIATES *by Gilles Demunter*[®]

©2021 PT SURGA TROPIS HIDUP. ALL RIGHTS RESERVED

www.gillesdemunter.com | info@gillesdemunter.com | +(62)819-99-971-591

GD Headquarters @ Made's Warung Unit #5, Jalan Raya Seminyak,
Seminyak, Kecamatan Kuta, Kabupaten Badung, Bali 80361, Indonesia.

GD&ASSOCIATES



GD&ASSOCIATES *by Gilles Demunter*[®]

©2021 PT SURGA TROPIS HIDUP. ALL RIGHTS RESERVED

www.gillesdemunter.com | info@gillesdemunter.com | +(62)819-99-971-591
GD Headquarters @ Made's Warung Unit #5, Jalan Raya Seminyak,
Seminyak, Kecamatan Kuta, Kabupaten Badung, Bali 80361, Indonesia.